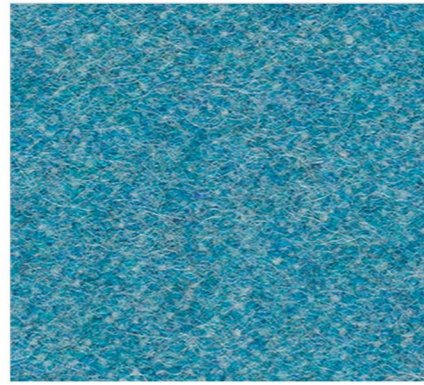


Magic
CF1105

bute



Dragon
Item Code CF1105/0418



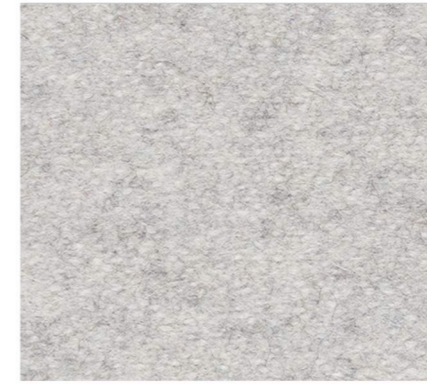
Roundabout
Item Code CF1105/0310



Tree
Item Code CF1105/0626



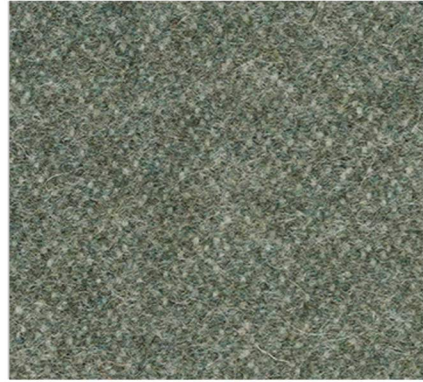
Samantha
Item Code CF1105/0305



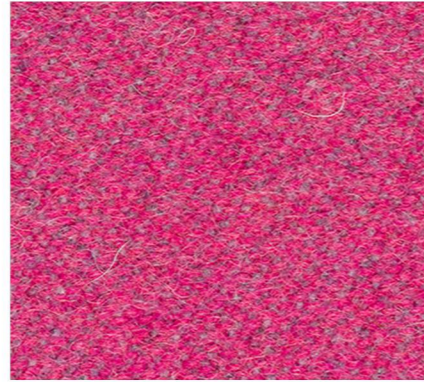
Bunny
Item Code CF1105/0304



Mushroom
Item Code CF1105/0309



Harry
Item Code CF1105/0314



Trick
Item Code CF1105/0420



Voodoo
Item Code CF1105/0625



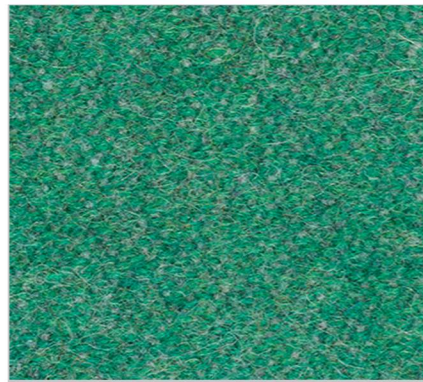
Mike
Item Code CF1105/0317



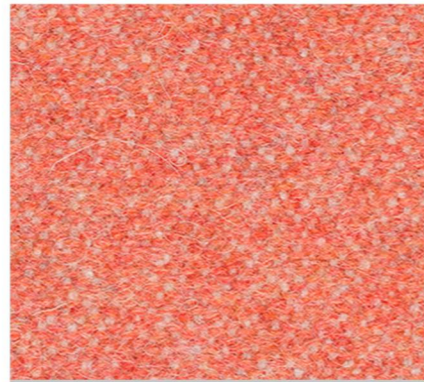
Moment
Item Code CF1105/0308



Mojo
Item Code CF1105/0422



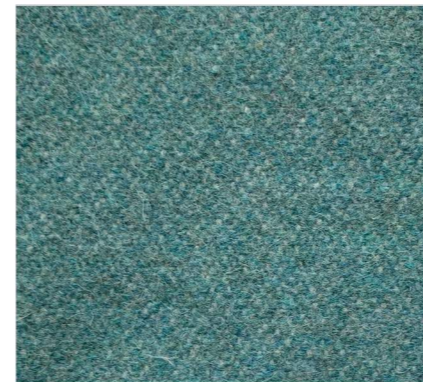
Enchanted
Item Code CF1105/0419



Potion
Item Code CF1105/0316



Night
Item Code CF1105/0624



Wand
Item Code CF1105/0311



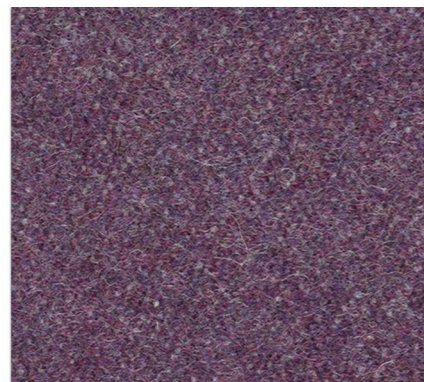
Eye
Item Code CF1105/0312



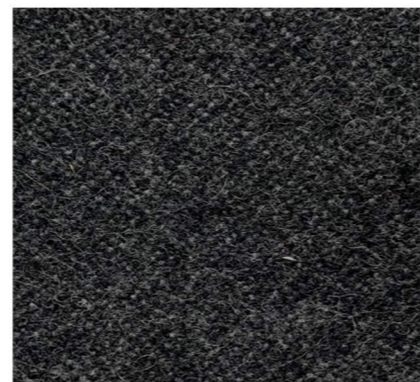
Charm
Item Code CF1105/0612



Bewitched
Item Code CF1105/0315



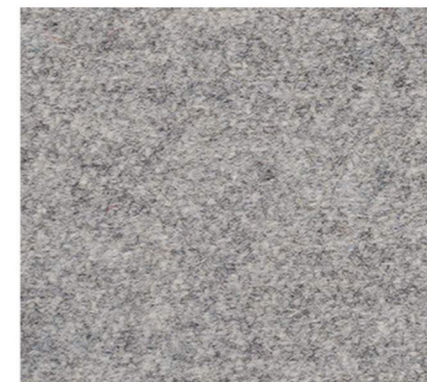
Spell
Item Code CF1105/0421



Mantra
Item Code CF1105/0607



Wish
Item Code CF1105/0313



Mirror
Item Code CF1105/0307



Radio
Item Code CF1105/0423

Magic
CF1105

Enquiries
sales@butefabrics.com
butefabrics.com

bute

Magic CF1105

bute

Design

Magic CF1105
by Bute Design Studio.

Application

Recycled wool melton: woven upholstery and drapery fabric suitable for both heavy duty contract and domestic applications.

Composition

70% wool, 25% polyamide,
5% other fibres. *All fibres are
from a recycled source.



Fabric Weight

650g/linear metre, 464g/m² approx.

Fabric Width

140cm approx. standard usable width.

Fabric Length

Lengths controlled and registered
by calibrated measuring devices.

Abrasion Resistance

Martindale 70,000 cycles

Light Fastness

Colours comply with the requirements
of BS EN ISO 105 – B02

Flame Retardancy Certifications

Passes Crib 5 Contract Upholstery
Passes Cigarette and Match
Passes Curtain and Drape
Passes IMO Upholstery

After Care

Regular maintenance greatly extends
the useful life of a fabric. Ask for details
of cleaning recommendations or consult
a professional cleaning organisation.

Special Requirements

Customised shades can be produced
to meet individual requirements. Our
Design Studio also collaborates in the
development of special fabrics to fulfill
aesthetic or fitness-for-purpose criteria.

Ongoing Development

It is our policy to promote continuous
product development and we therefore
reserve the right to change technical
fabrics from the Bute Collection without
prior notice.

Bute Fabrics Ltd is an accredited BS EN ISO 9001 company.
ISO 14001 Environmental Management System.

Wool is a natural fibre and is fully recyclable.
Made in Scotland

Enquiries

T +44 (0)1700 503 734

F +44 (0)1700 504 545

sales@butefabrics.com

butefabrics.com

Bute Fabrics Ltd. 4 Barone Road, Rothesay, Isle of Bute, Scotland PA20 0DP
Registered in Scotland SC062040. VAT Reg No. GB 292 9471 19